

CUSTOMIZATION / HIGH QUALITY / PATIENCE / INNOVATION



FOSHAN HUASHENG FURNITURE
华昇家具

FOSHAN HUASHENG FURNITURE CO.,LTD

Hotel ,Apartment ,Villa Furniture

COMPANY INTRODUCTION/ENTERPRISE PROFILE

2024

CONTENTS

01

Company Introduction

P3-P8

02

Our Factory

P9-P19

03

Qualification

P20-P22

04

Project showcase

P23-P31

05

Hotel Engineering Cases

P32-P59

06

After-sales Service

P60-61



1

PART ONE

Company Introduction

Company introduction, Product range, Process Introduction, Refine control of the whole process

Company Introduction

Company Name: Foshan Huasheng Furniture Co., Ltd

Established on February 13, 2010

Factory location: Lecong Town, Shunde District, Foshan City, Guangdong Province

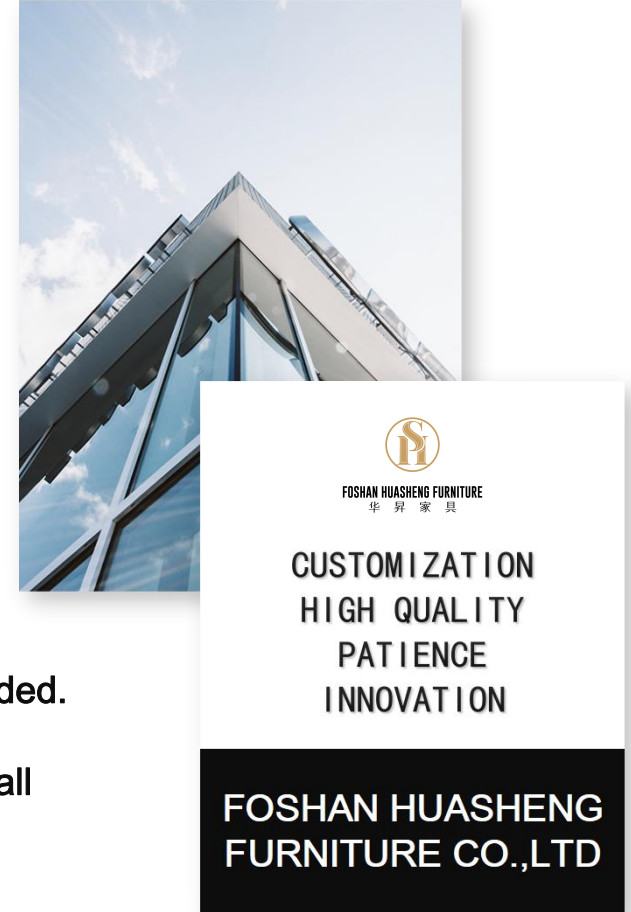
Factory and showroom area: more than 10000 square meters

Employees: Huasheng Furniture have more than 65 professional skilled workers ,professional salesteam, professional production team ,Creation have great ability to produce high quality furniture according to customer's different designed furniture.

Factory and showroom area: more than10000 square meters

Our service: Quote price within 24 hours after receiving inquiry. Recommend furniture for customer if needed.

Offer professional suggestion for furniture construction,design. Make mock up/samples about 15 days after all drawings,material,finishes confirmed.Display furniture samples in factory's showroom show the effect. Mass production takes about 50 days after confirm order, drawings,material,finishes etc. Offer installation guide,installation video to guide installation of KD package items,such as wardrobe,bedbase,etc. Good after-sale service,one year guarantee, right attitude deal with complaint,try best to solve problem for customer.



What we offer:

01

High quality control

02

Highly competitive prices

03

state-of-art technology products

04

Best professional team of design

05

Smoothly communication.

06

Professional OEM&ODM service.

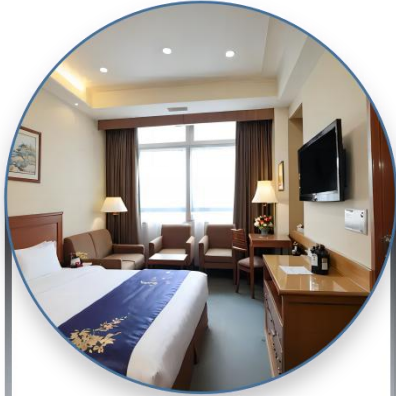




FOSHAN HUASHENG FURNITURE
华昇家具

Product Range

Professionally produce Custom-made furniture according requirement.



**Hotel
Bedroom
Furniture**



**Villa, Apart
ment/Flat
and Club
Furniture**



**Custom
Dining
Furniture**



**Outdoor
Furniture**



FOSHAN HUASHENG FURNITURE
华昇家具

Process Introduction

Unique fine carving fine training!

1、 High temperature steaming

High temperature and high pressure cooking, air drying, and steam kiln drying. The high-temperature and high-pressure steam meter extracts high moisture and residual glue from the wood, and steam drying enables the wood to reach the required moisture content for furniture production, while also achieving

The effect of sterilization and pest control. Ensure that the processed logs do not deform, mold, rot, or infest insects, and the moisture content is generally below 10%. At this time, the wood surface has a glossy, uniform color, fine texture, and a medium structure.

2、 Drying treatment

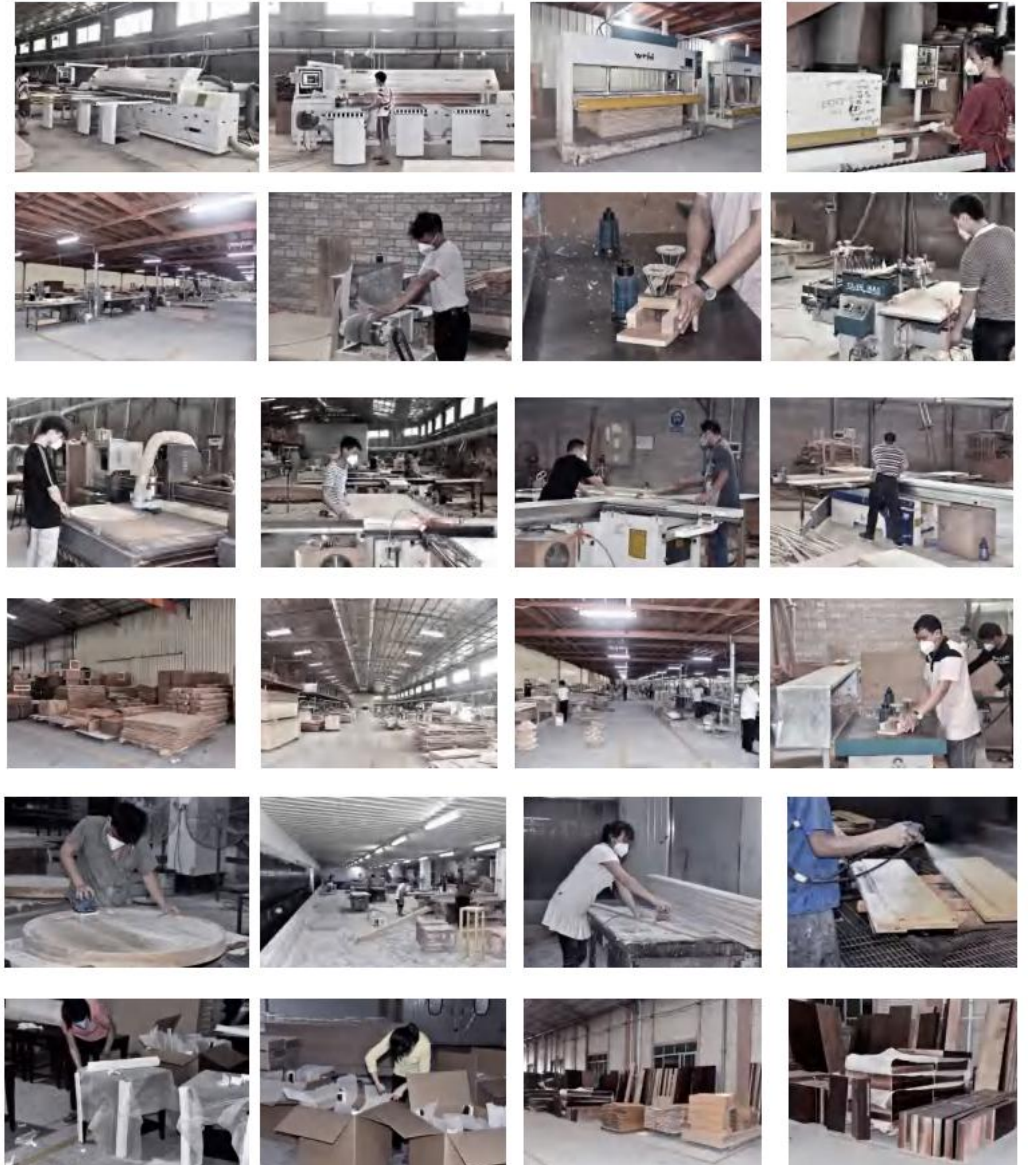
Drying treatment is the first and crucial step in furniture manufacturing. How to handle it—— Steam drying treatment.

The drying process is divided into three steps:

1. Preheating treatment: mainly low temperature and high humidity, to balance the temperature inside and outside the wood, and preliminarily reduce water content

2. Drying stage: The main step is to gradually increase the temperature, gradually reduce the humidity, extract the water inside and outside the wood, and achieve the desired moisture content;

3. Final treatment: After further treatment to ensure consistency between the inside and outside of the wood and to maintain it at room temperature, the internal stress generated during the drying process is eliminated.





FOSHAN HUASHENG FURNITURE
华昇家具

Refine control of the whole process



Contract + design scheme

Base on customer provided effect drawing design furniture scheme, we provide exclusive design and sales of full service.



Sampling + production

Before production, the design and production department should discuss all aspects of furniture performance and produce samples to the customer for confirmation; To be confirmed before the production of massive orders.



Packaging + shipping

After all departments confirm that there is no quality problem, the packaging plan is formulated according to different types of furniture to ensure that the furniture can safely arrive at the scene.



Assemble + quality inspection

The skillful installation team (10+ years experience; Base on the different needs of customers can complete the order according to quality and quantity request.



2

PART TWO

Our Factory

Factory Appearance, Mechanical Equipment, Wordshop Appearance, Surrounding Facility

Factory Appearance



FOSHAN HUASHENG FURNITURE
华昇家具





FOSHAN HUASHENG FURNITURE
华昇家具

Mechanical Equipment





FOSHAN HUASHENG FURNITURE
华昇家具

Mechanical Equipment





FOSHAN HUASHENG FURNITURE
华昇家具

Mechanical Equipment





FOSHAN HUASHENG FURNITURE
华昇家具

Mechanical Equipment





FOSHAN HUASHENG FURNITURE
华昇家具

Wordshop Appearance





FOSHAN HUASHENG FURNITURE
华昇家具

Wordshop Appearance





FOSHAN HUASHENG FURNITURE
华昇家具

Wordshop Appearance





FOSHAN HUASHENG FURNITURE
华昇家具

Wordshop Appearance





FOSHAN HUASHENG FURNITURE
华昇家具

Surrounding Facility

Material Purchase

Lecong Steel market

Longwei furniture material city

Asia Pacific International wood Industry City

Dongxin stone trading center

Leading furniture material market

Shuiteng international wood decoration materials market

Asian International furniture material trading center

Transportation & Logistics

Asia International logistics Center

Tengjun home e-commerce logistics Park

Intermodal e-commerce logistics Park

Helle Logistics Park

Coastal logistics Park

Fubon Logistics Park

Exhibition center

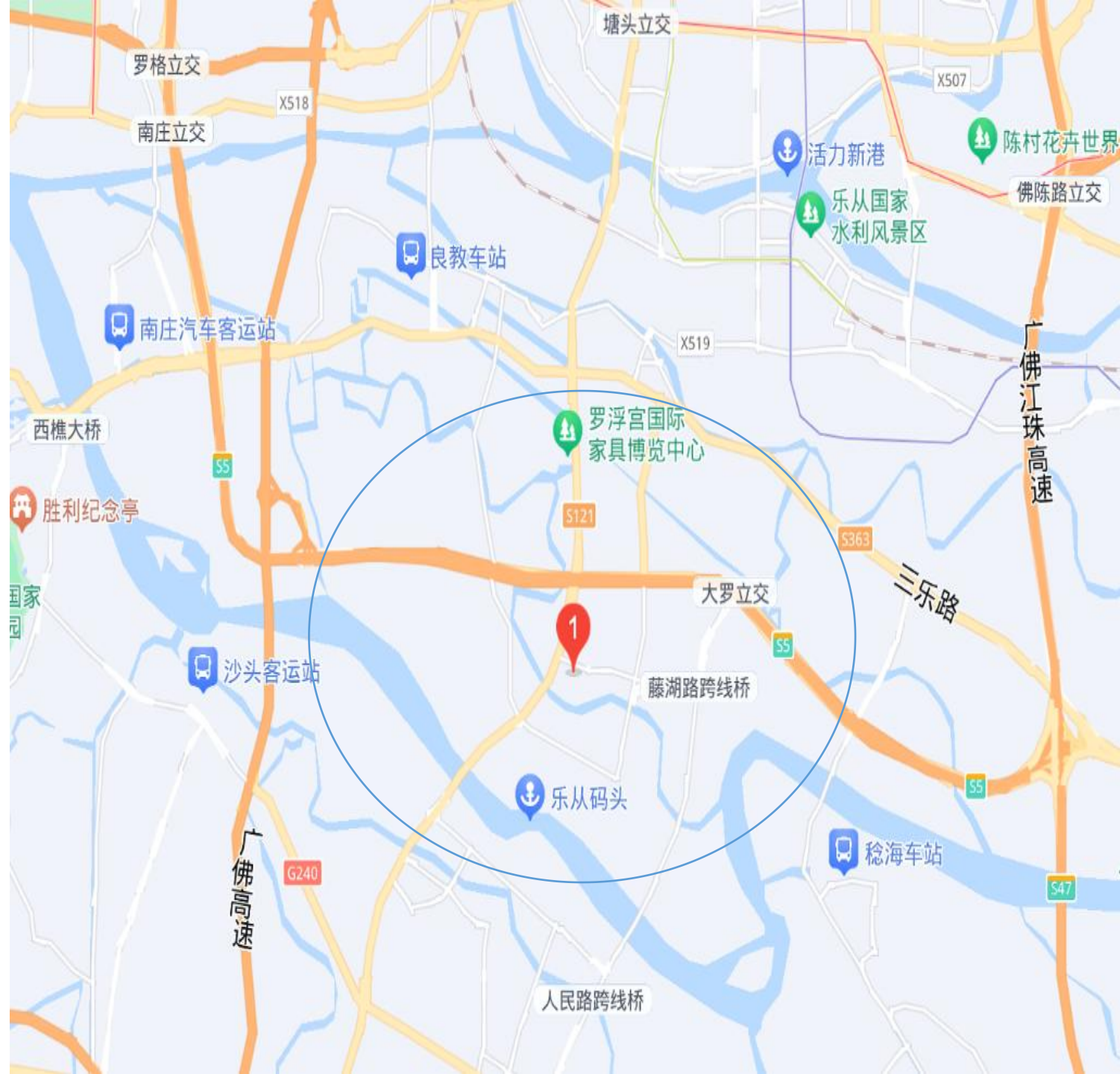
Louvre International Furniture Expo Center

Foshan Furniture Expo City

Sun-link furniture center

Le Cong furniture world

Lecong International Furniture Center





3

PART THREE

Qualification

Business license, export license, production certification



FOSHAN HUASHENG FURNITURE
华昇家具

Qualification

不可转让 复制

统一社会信用代码
91440609MA567R5Y3Q

营业执照

扫描二维码
“国家企业信用信息公示系统”
了解更多登记、备案、许可、监管信息。

名称 佛山市华昇家具有限公司 注册资本 人民币壹佰万元
类型 有限责任公司(自然人独资) 成立日期 2021年04月08日
法定代表人 杨传华 住所 佛山市南海区西樵镇联益十三队工业区何厘友一房自编1号(住所申报)
经营范围 一般项目:家具制造;家具销售;货物进出口;技术进出口(除依法须经批准的项目外,凭营业执照依法自主开展经营活动)。许可项目:货物进出口。(依法须经批准的项目,经相关部门批准后方可开展经营活动,具体经营项目以相关部门批准文件或许可证件为准)

登记机关 佛山市南海区市场监督管理局
2022年10月14日

国家企业信用信息公示系统网址: <http://www.gsxt.gov.cn> 国家市场监督管理总局监制

第 71901246 号

商标注册证

核定使用商品/服务项目(国际分类:20)
第20类:家具;存放用运输用非金属容器;工作台;瓶子(玻璃瓶);竹木工艺品;木制造型树脂雕;食品用塑料制成品;家具用非金属附件;垫枕;门用非金属附件(截止)

注册人 佛山市华昇家具有限公司
注册人地址 广东省佛山市南海区西樵镇联益十三队工业区何厘友一房自编1号A(住所申报)
注册日期 2024年01月14日 有效期至 2034年01月13日
局长 申尔南 发证机关 佛山市市场监督管理局

出口退(免)备案表

企业名称	佛山市华昇家具有限公司
统一社会信用代码	91440609MA567R5Y3Q
法定代表人	杨传华
注册地址	佛山市南海区西樵镇联益十三队工业区何厘友一房自编1号A
备案日期	2024-01-14
有效期	2024-01-14至2025-01-13

对外贸易经营者备案登记表

经营者名称	佛山市华昇家具有限公司
统一社会信用代码	91440609MA567R5Y3Q
法定代表人	杨传华
注册地址	佛山市南海区西樵镇联益十三队工业区何厘友一房自编1号A
备案日期	2024-01-14
有效期	2024-01-14至2025-01-13

中华人民共和国海关 报关单位注册登记证书

重要提示: 报关单位注册登记证书有效期为4年(自2024年1月1日至2028年12月31日), 有效期满前30日, 报关单位应当向海关申请换发。未申请换发的, 证书自动失效。

统一社会信用代码: 91440609MA567R5Y3Q
海关名称: 佛山市南海区税务局
注册日期: 2024年1月14日
有效期至: 2028年12月31日

机构信用代码证

代码: G28440609017913302
名称: 佛山市华昇家具有限公司
地址: 广东省佛山市南海区西樵镇联益十三队工业区何厘友一房自编1号A
有效期: 截至2025年11月13日

中国绿色材料标志授权使用证书

证书编号: G28440609017913302
申请人: 佛山市华昇家具有限公司
产品: 装饰板
有效期: 2024年1月14日至2025年11月13日

Verification of Compliance

Certificate Number: B-210173782
Océanisation products Regulation (RoHS No 2002/95/EC)
Manufacturer: Jiansheng Furniture Co., Ltd.
Product: Artificial decorative board
Model No.: G-24C-SPC-MFL-MFC-EPACTY

中国环保产品(II型)认证证书

证书编号: 06030701103044
申请人: 佛山市华昇家具有限公司
产品: 装饰板
有效期至: 2025年11月13日



FOSHAN HUASHENG FURNITURE
华昇家具

Qualification

SGS **MA** **CNAS** 中国合格评定国家认可委员会 TESTING CNAS L6588

检测报告 ASD-00-003873-01 发布日期: 2020年03月07日

客户名称: 江苏优盛装饰材料有限公司
客户地址: 洪泽县经济开发区328省道东侧第一道南侧

样品名称: 双面实木理化板 (优盛)
生产商: 江苏优盛装饰材料有限公司
样品型号: /
生产日期: /
样品其他信息: 产品规格: 12.7mm-25.4mm

以上样品及信息由客户提供及确认, SGS不承担证实客户提供信息的准确性, 适当时承担法律责任。

SGS报告号: SHN20010044848C
样品接收日期: 2020年02月12日
检测日期: 2020年02月12日 - 2020年03月06日
检测地点: 最新客户要求检测
检测方法: 请参见下一页
检测结果: 请参见下一页

除非另有说明, 本检测报告仅与被检测物品有关, 未经检测机构书面同意, 委托人不得擅自使用检测结果进行不当宣传。

SGS授权签字人: 国家化学建材质量监督检验中心

SGS 成员公司: 通标标准技术服务(上海)有限公司
第1页, 共3页

Member of the SGS Group (SISE SA)

MA **AL** **CNAS** 中国认可 国家互认 检测 TESTING CNAS L6116

检测报告
TEST REPORT

报告编号: 2117409900
样品名称: 优盛双面实木理化板
委托单位: 江苏优盛装饰材料有限公司
受检单位: /
检测类别: 委托检测

国家化学建材质量监督检验中心
STATE CENTER OF SUPERVISION AND TEST FOR
CHEMICAL BUILDING MATERIALS

CNAS 中国合格评定国家认可委员会 TESTING CNAS L6588

TEST RESULT REPORT

Report No. SHCME-HUCJ-200008
Page 1 of 3
Date: Mar.3, 2020

客户名称: 江苏优盛装饰材料有限公司
客户地址: 洪泽县经济开发区328省道东侧第一道南侧

下列样品是客户提供及确认:
产品名称: 双面实木理化板 (优盛) (12.7mm-25.4mm)
样品规格: 13.8mm
生产商: 江苏优盛装饰材料有限公司
样品编号: NIG202001011
收样日期: 2020年1月23日
测试日期: 2020年2月13日 - 2020年3月2日
测试标准: 见见下表

通标标准技术服务(上海)有限公司
授权签字人: 范博特 技术主管

EMTEK **RoHS**

Certificate of Conformity
NO.: EG191231987C91MVer.1

This product was tested in accordance with the following standard, the submitted sample complied with the requirements of Directive 2011/65/EU (RoHS) and Commission delegated Directive(EU)2017/2102

Applicant: Jiangsu Youshengmei Decoration Materials Co., Ltd.
Address: Hongze County Economic Development Zone 328 Provincial Highway East Side/Wanghuo South Side, Jiangsu, China
Product Name: 优盛双面实木理化板, 优盛理化板
Model: C-SPC, SPC
Testing Method: IEC62321-5:2013/IEC62321-4:2013+A1:2017, IEC 62321-7-2:2014/IEC 62321-8:2015

CE RoHS

通标标准技术服务(上海)有限公司
授权签字人: 范博特 技术主管

This certificate shall not be altered, increased or deleted. The results shown in this certificate refer only to the sample(s) tested. Without written approval of EMTEK, this certificate shall not be copied except in full and published as advertisement.



4

PART FOUR

Project showcase

Classic engineering cases (part)



FOSHAN HUASHENG FURNITURE
华昇家具

Classic Engineering Cases (part)

NO.	Project Name	Star Rank	Location	Date
1	Pearl Rotana Capital Centre	★ ★ ★ ★ ★	Dubai, United Arab Emirates	1st Jul.,2017
2	Glorious Hungarian Hotel	★ ★ ★ ★	Hungary	20th Apr.,2017
3	Rawanda Resort	★ ★ ★ ★ ★	Rwanda	21st Dec.,2018
4	Marriott Apartment, Muscat, Oman	★ ★ ★ ★	Muscat, Oman	10th Jul.,2018
5	The Westin Singapore	★ ★ ★ ★	Singapore	23rd Nov.,2018
6	Marriott Hotel	★ ★ ★ ★	Belgium	28th Nov.,2018
7	Hilton Hotel	★ ★ ★ ★ ★	USA	3rd May,2020
8	Wyndham hotel	★ ★ ★ ★	Tailand	21st Jul.,2021
9	Guizhou Nordsmary Boutique Hotel	★ ★ ★	China	1st Apr.,2021
10	Lifeng Hotel Hezhou, Guangxi	★ ★ ★ ★	China	20th Dec.,2021
11	Jifeng Hotel,	★ ★ ★ ★	China	13th Mar.,2021
12	Shimao Hilton Hotel Shenyang	★ ★ ★ ★	China	17th Mar.,2022
13	Yueshan Lin Hotel, Xinyifeng	★ ★ ★	China	1st Nov.,2022
14	Platinum Hotel	★ ★ ★	China	7th Aug.2022



FOSHAN HUASHENG FURNITURE
华昇家具

Classic Engineering Cases (part)

NO.	Project Name	Star Rank	Location	Product
15	First Stage Hotel of Linzhi Livos Gongbu Manor, Tibet	★ ★ ★ ★	China	Hotel furniture
16	Qingshan Hotel, Suzhou	★ ★ ★ ★	China	Hotel furniture
17	Tiandi Lisheng Hotel	★ ★ ★ ★ ★	China	Hotel furniture
18	Wujiang East Taihu Hotel	★ ★ ★ ★ ★	China	Hotel furniture
19	Heng'an Swiss Hotel	★ ★ ★ ★ ★	China	Hotel furniture
20	Marriott Hotel	★ ★ ★ ★	China	Hotel furniture
21	Sanya Hailou Yunyue Lower Hotel	★ ★ ★ ★ ★	China	hotel bedroom furniture
22	Snow Flower Mountain Hotel, shandong	★ ★ ★ ★	China	hotel bedroom furniture
23	Zhangmutou Garden Hotel, dongguan	★ ★ ★ ★	China	hotel bedroom furniture
24	Pullman Huaian Hotel	★ ★ ★ ★	China	hotel bedroom furniture
25	Sheraton Hotel, zhaoqing	★ ★ ★ ★	China	hotel bedroom furniture
26	Haiyang Ligong International Hotel	★ ★ ★ ★	China	hotel bedroom furniture
27	Zhapo Peninsula International Apartment	★ ★ ★ ★	China	hotel bedroom furniture
28	Zuoquan Hotel	★ ★ ★ ★ ★	China	hotel bedroom furniture



FOSHAN HUASHENG FURNITURE
华昇家具

Project Showcases (part)

宁德帝景假日酒店 Ningde Dijing Holiday INN



Foshan Huasheng furniture Co., Ltd



FOSHAN HUASHENG FURNITURE
华昇家具

Project Showcases (part)

厦门威斯汀酒店 Westin Hotel, xiamen

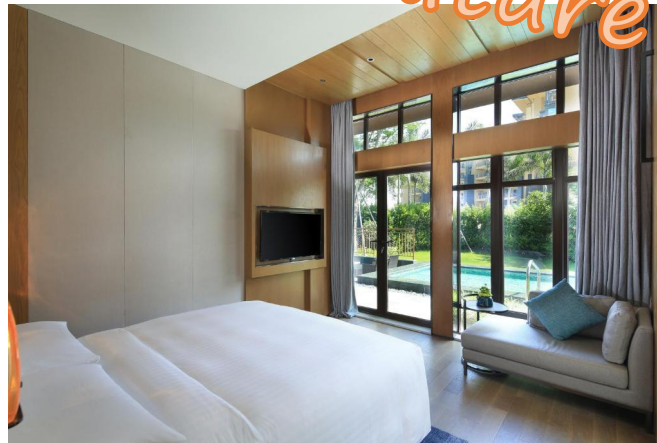




FOSHAN HUASHENG FURNITURE
华昇家具

Project Showcases (part)

厦门万豪酒店 Marriott Hotel,xiamen





FOSHAN HUASHENG FURNITURE
华昇家具

Project Showcases (part)

嘉发希尔顿逸林酒店 Jiafa Hilton Yilin Hotel



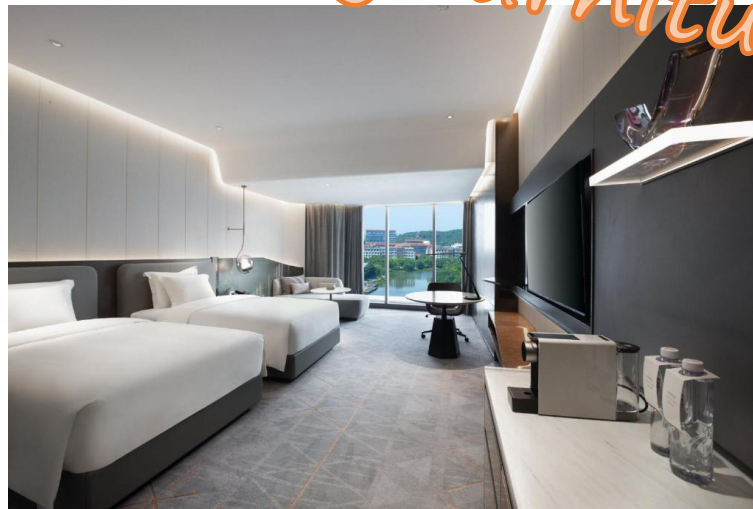
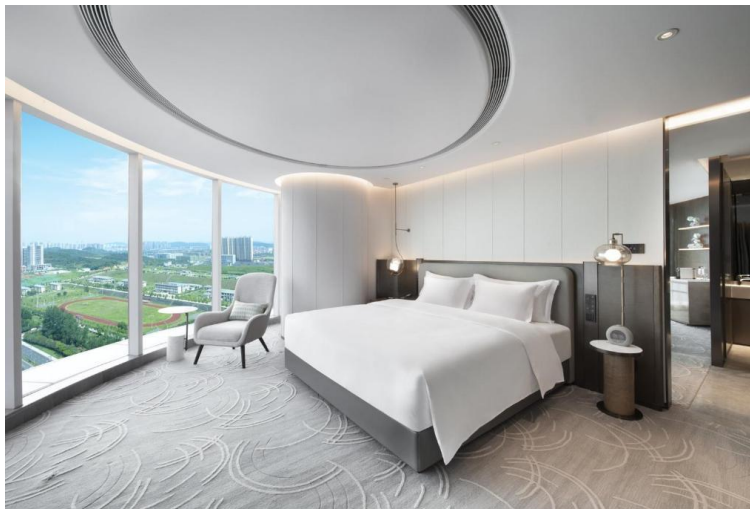
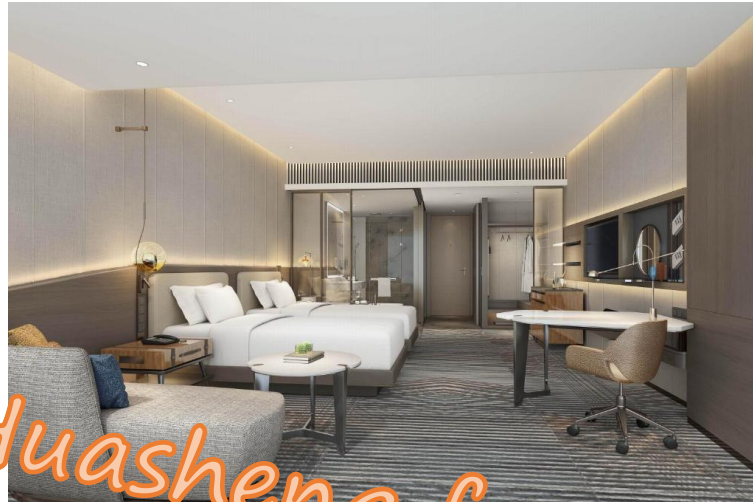
Foshan Huasheng furniture Co., Ltd



FOSHAN HUASHENG FURNITURE
华昇家具

Project Showcases (part)

武汉皇冠假日酒店 Crowne Plaza ,wuhan





FOSHAN HUASHENG FURNITURE
华昇家具

Project Showcases (part)

珠海喜来登酒店 Sheraton Hotel, zhuhai





5

PART FIVE

Hotel Engineering Cases

Bedroom, Restaurant, Public area, Outdoor areas



FOSHAN HUASHENG FURNITURE
华昇家具

Hotel Engineering Cases--Bedroom





FOSHAN HUASHENG FURNITURE
华昇家具

Hotel Engineering Cases--Bedroom



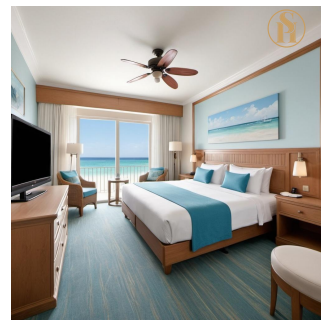
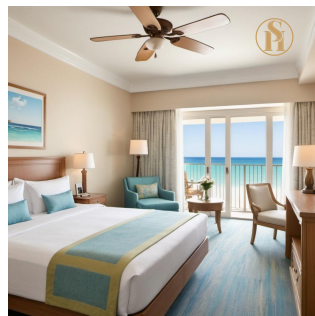
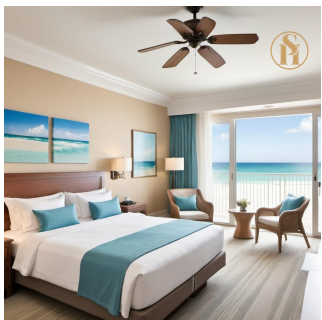
Hotel Engineering Cases--Bedroom





FOSHAN HUASHENG FURNITURE
华昇家具

Hotel Engineering Cases--Bedroom





FOSHAN HUASHENG FURNITURE
华昇家具

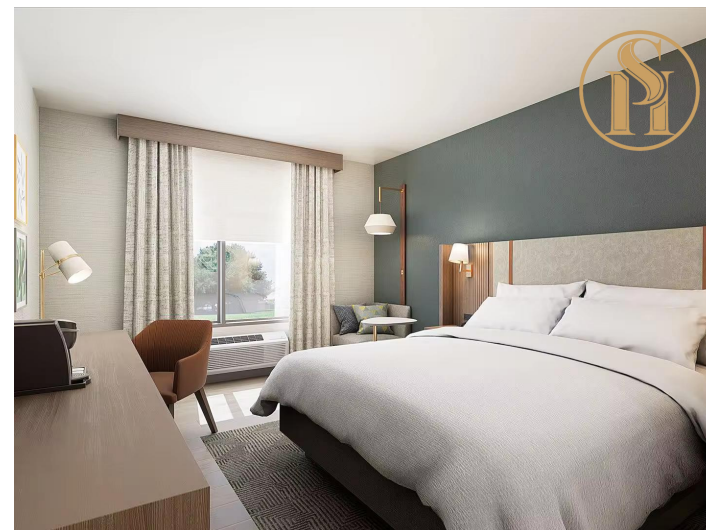
Hotel Engineering Cases--Bedroom





FOSHAN HUASHENG FURNITURE
华昇家具

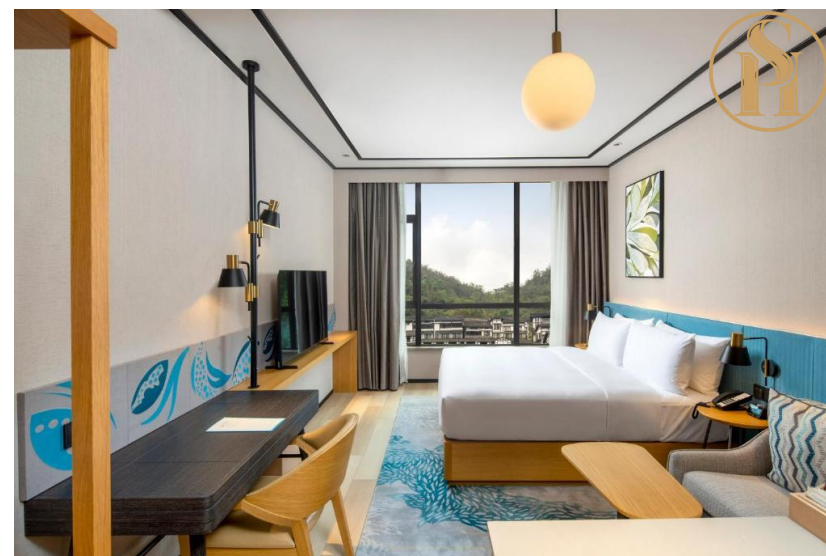
Hotel Engineering Cases--Bedroom





FOSHAN HUASHENG FURNITURE
华昇家具

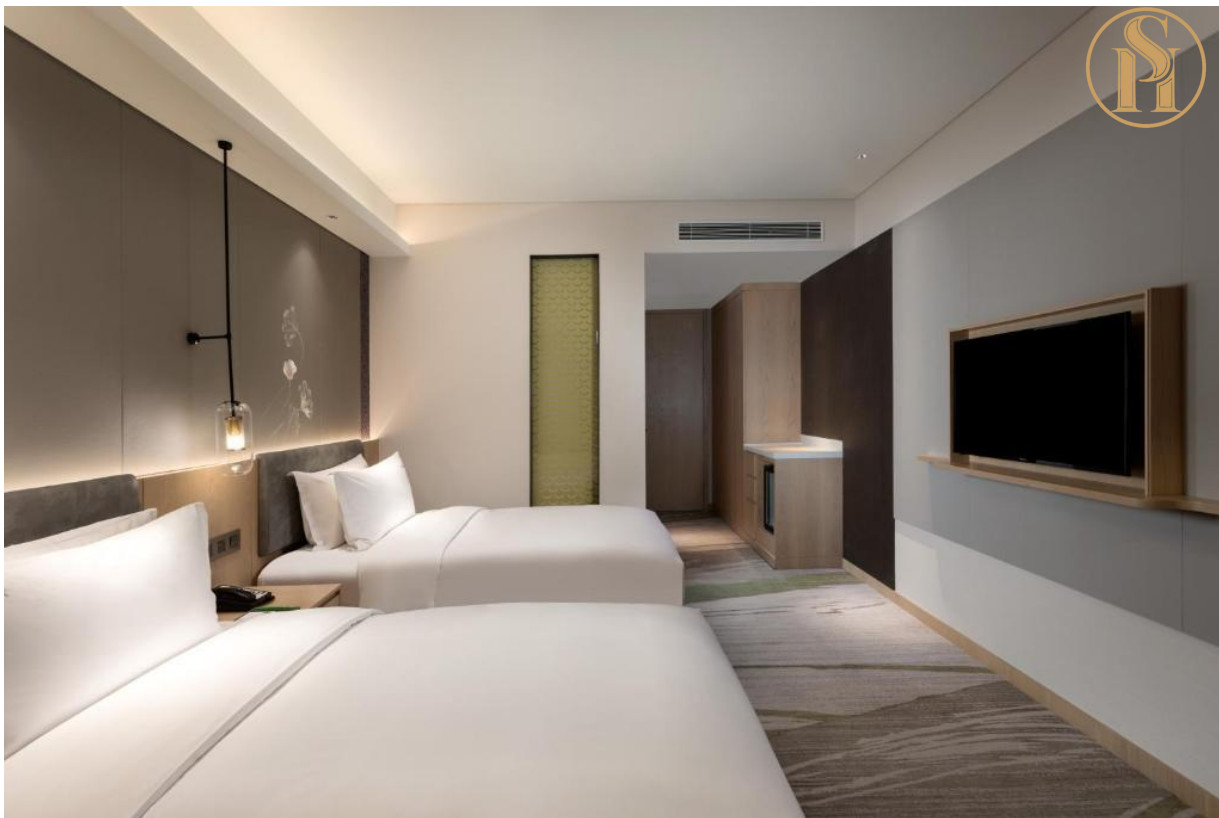
Hotel Engineering Cases--Bedroom





FOSHAN HUASHENG FURNITURE
华昇家具

Hotel Engineering Cases--Bedroom





FOSHAN HUASHENG FURNITURE
华昇家具

Hotel Engineering Cases--Bedroom





FOSHAN HUASHENG FURNITURE
华昇家具

Hotel Engineering Cases--Restaurant





FOSHAN HUASHENG FURNITURE
华昇家具

Hotel Engineering Cases--Restaurant





FOSHAN HUASHENG FURNITURE
华昇家具

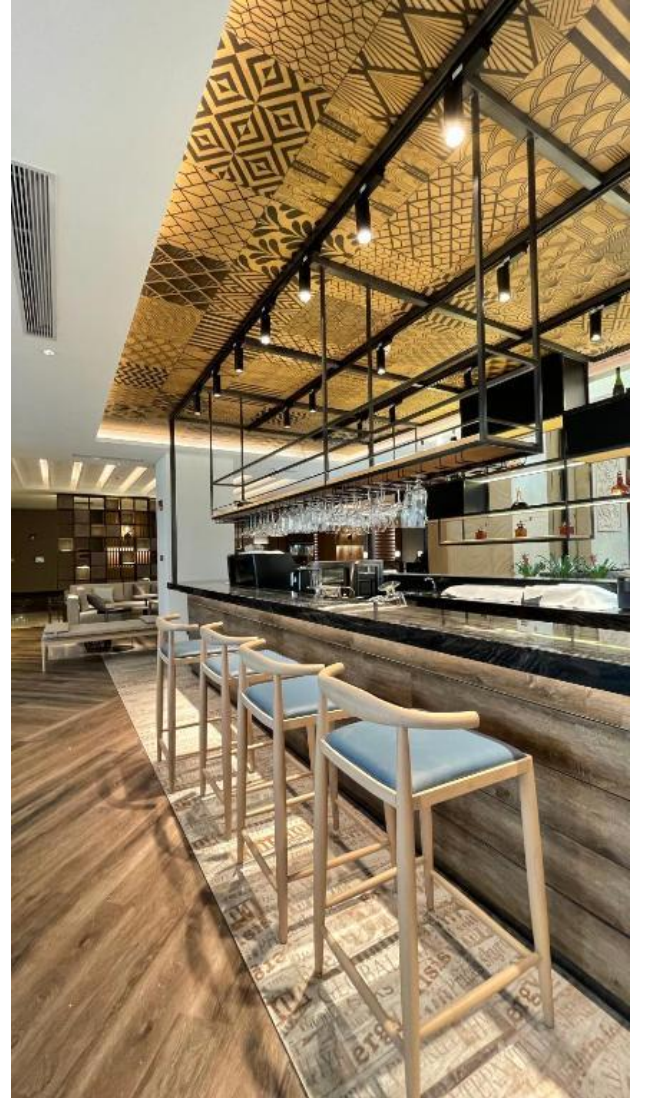
Hotel Engineering Cases--Restaurant





FOSHAN HUASHENG FURNITURE
华昇家具

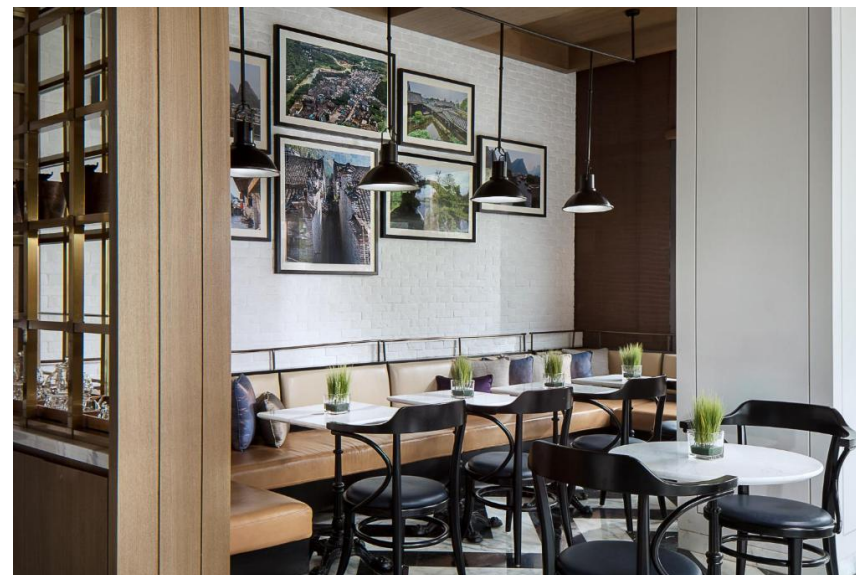
Hotel Engineering Cases--Restaurant





FOSHAN HUASHENG FURNITURE
华昇家具

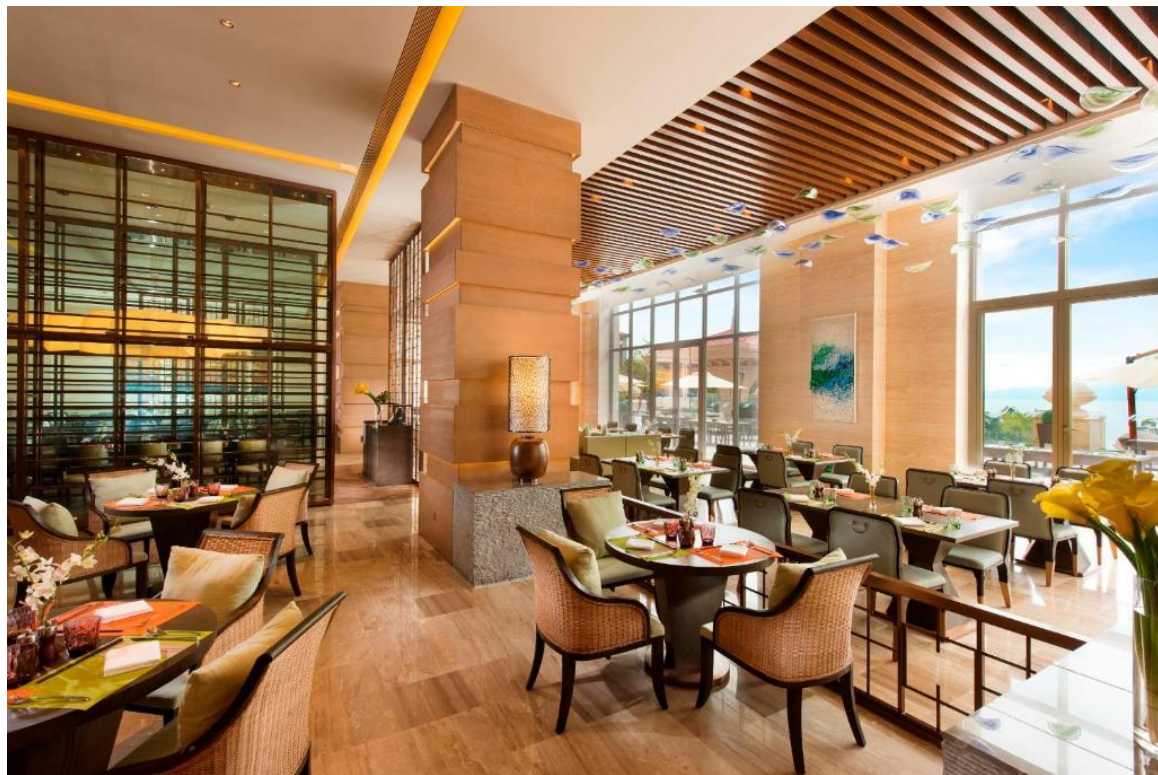
Hotel Engineering Cases--Restaurant





FOSHAN HUASHENG FURNITURE
华昇家具

Hotel Engineering Cases--Restaurant





FOSHAN HUASHENG FURNITURE
华昇家具

Hotel Engineering Cases--Public area





FOSHAN HUASHENG FURNITURE
华昇家具

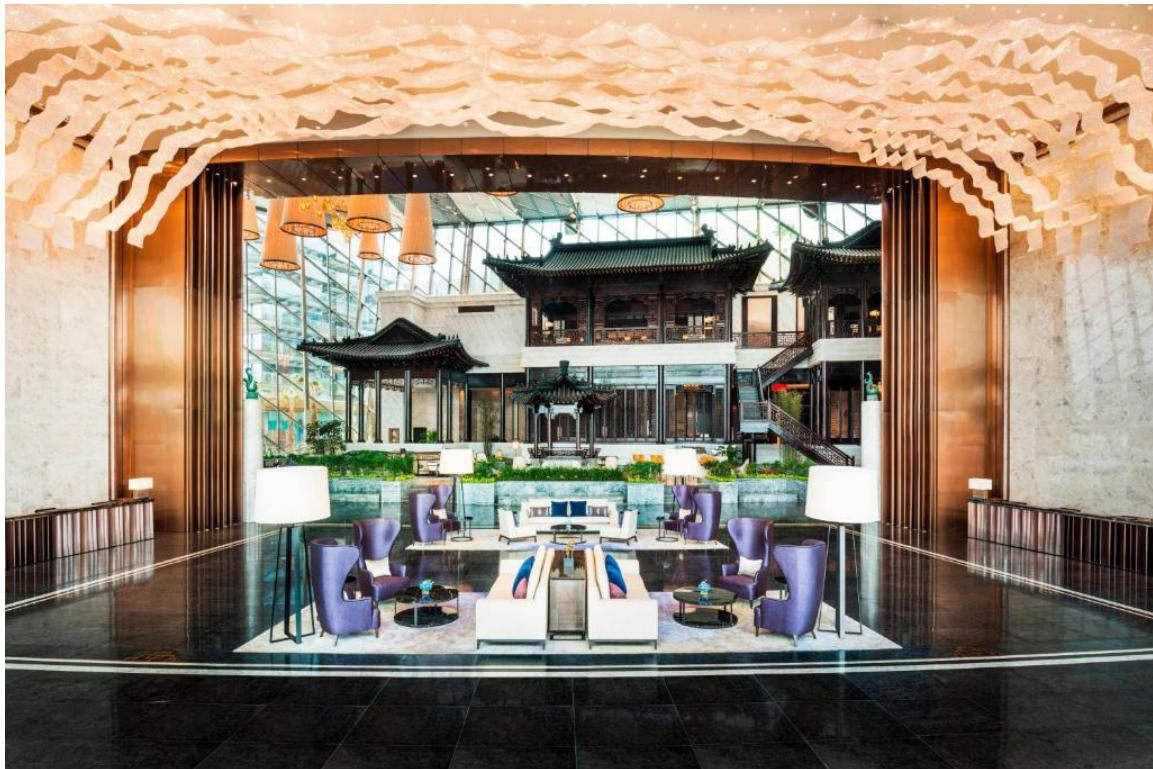
Hotel Engineering Cases--Public area





FOSHAN HUASHENG FURNITURE
华昇家具

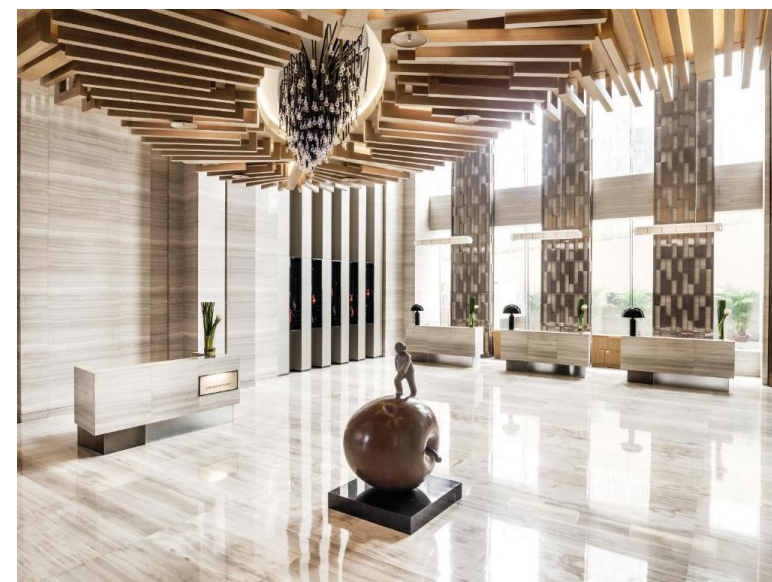
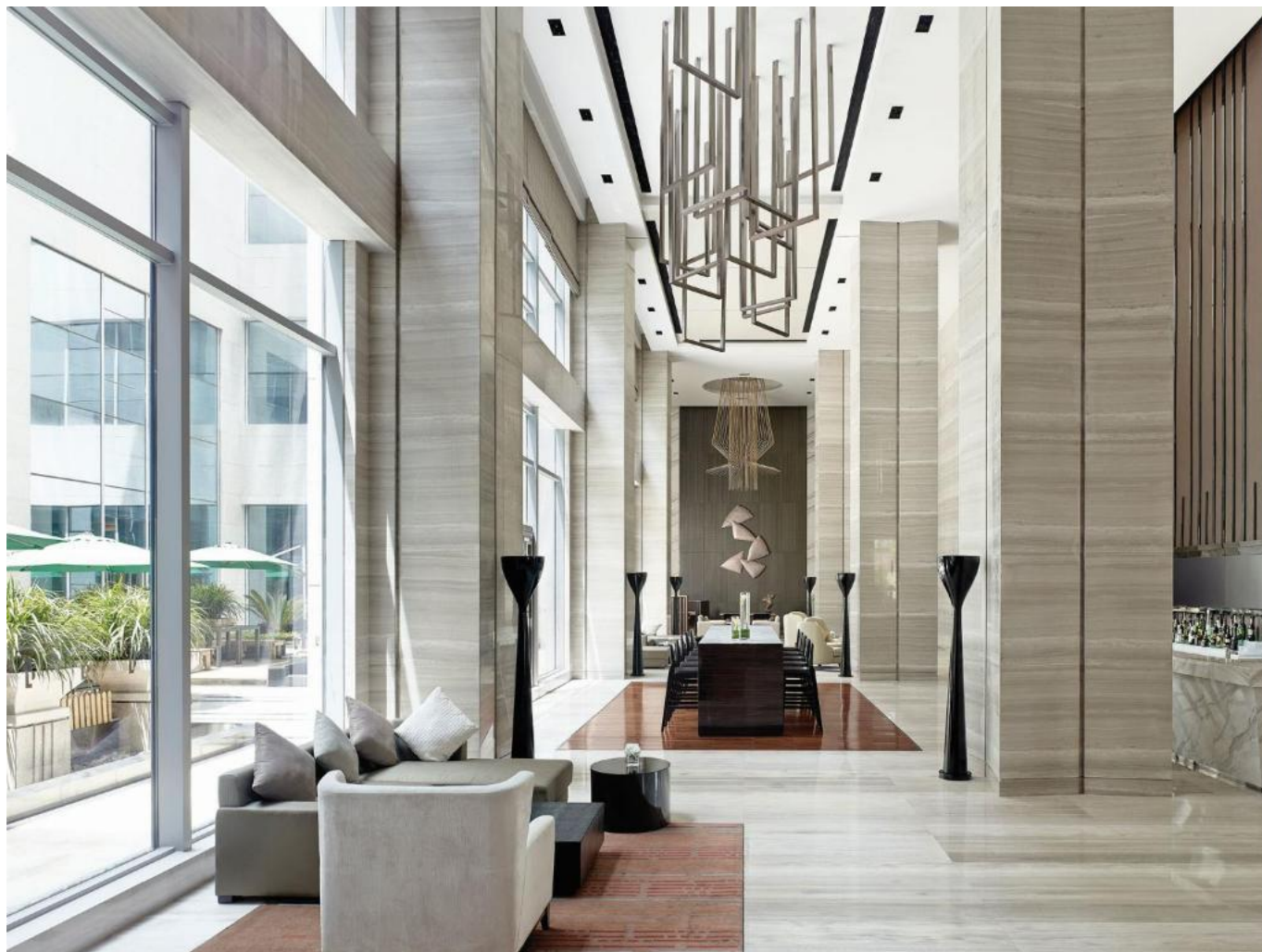
Hotel Engineering Cases--Public area





FOSHAN HUASHENG FURNITURE
华昇家具

Hotel Engineering Cases--Public area





FOSHAN HUASHENG FURNITURE
华昇家具

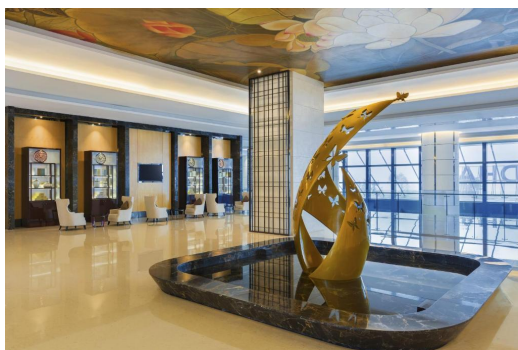
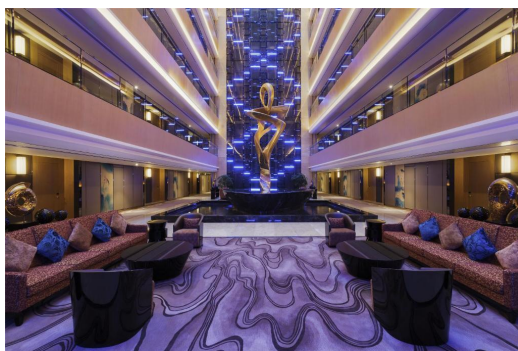
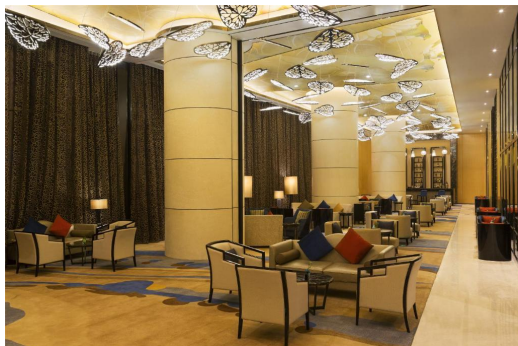
Hotel Engineering Cases--Public area





FOSHAN HUASHENG FURNITURE
华昇家具

Hotel Engineering Cases--Public area





FOSHAN HUASHENG FURNITURE
华昇家具

Hotel Engineering Cases--Outdoor areas



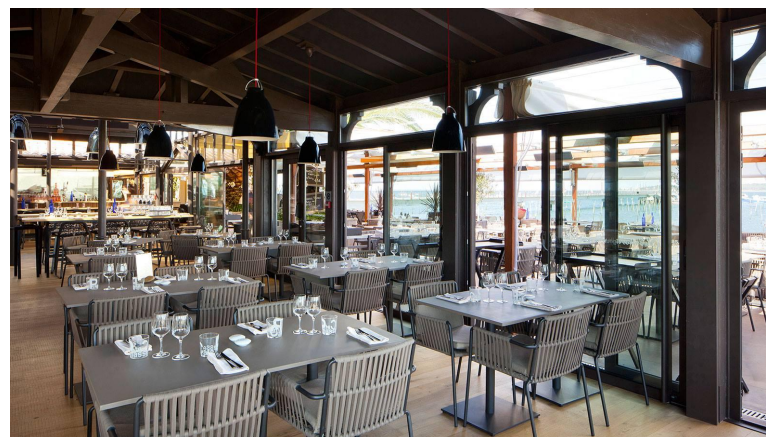
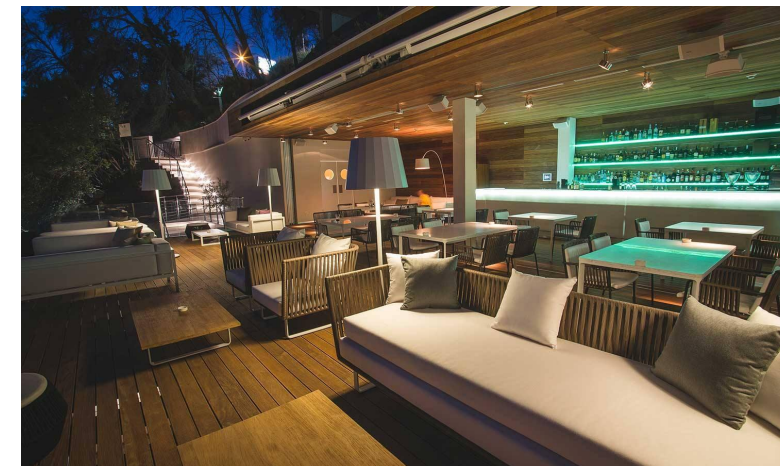
Hotel Engineering Cases--Outdoor areas





FOSHAN HUASHENG FURNITURE
华昇家具

Hotel Engineering Cases--Outdoor areas





FOSHAN HUASHENG FURNITURE
华昇家具

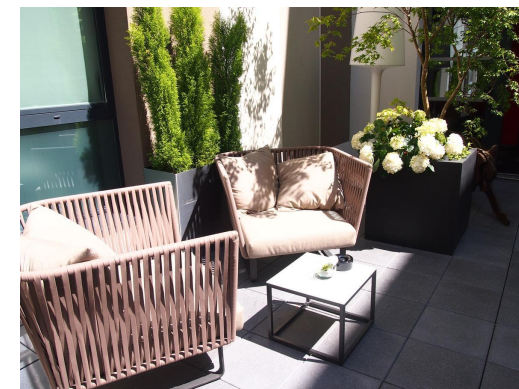
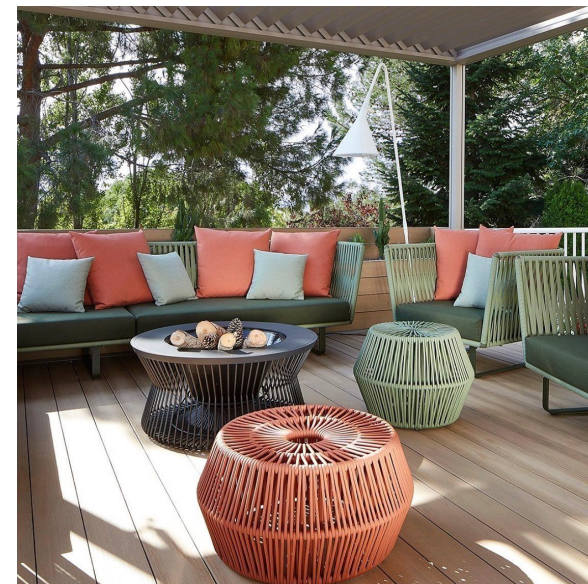
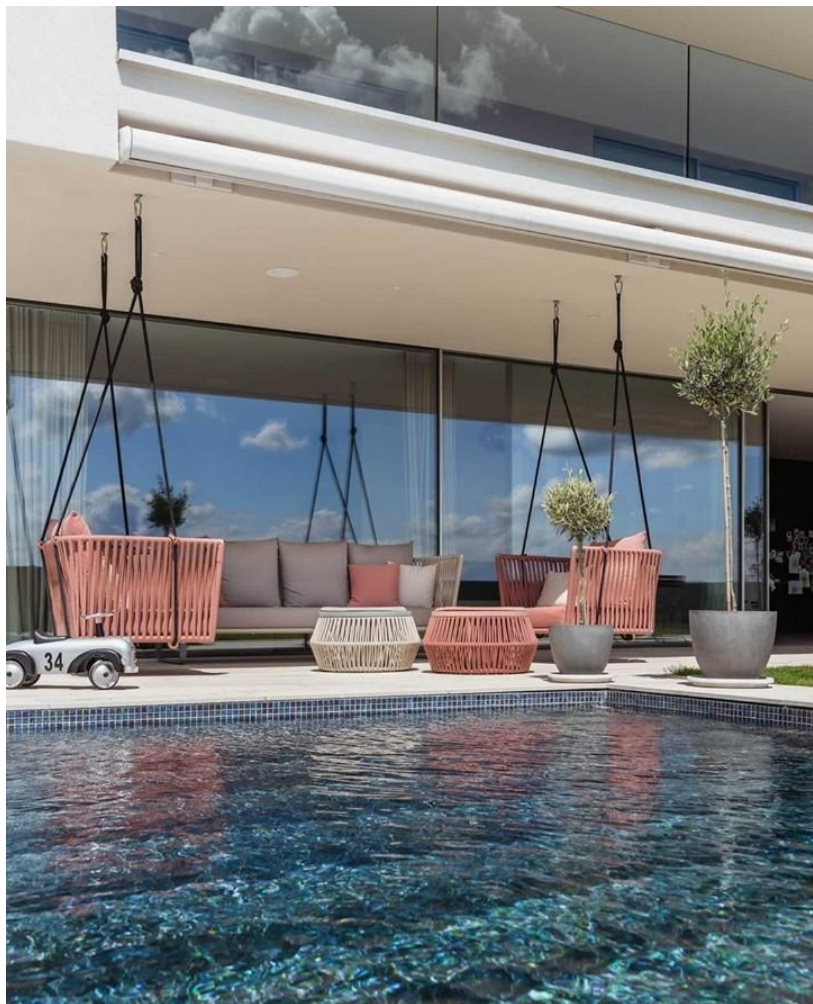
Hotel Engineering Cases--Outdoor areas





FOSHAN HUASHENG FURNITURE
华昇家具

Hotel Engineering Cases--Outdoor areas





6

PART SIX

After-sales Service



FOSHAN HUASHENG FURNITURE
华昇家具

After-sales Service

1.) Accessories ordering

When the customer needs to expand or update, or due to other reasons need to order accessories or spare parts, We can do the job for customer to arrange ordering.

2.) Documentation of customer information, establishment of customer network system

Foshan Huasheng Furniture Co., Ltd. keep all customer details (number, customer name, address, the main person in charge, contact phone, purchase product content, etc.) and built data, after receiving customer calls, in the complex customer network system, convenient our company make the correct response quickly.

3) Other services

- a、 Provide comprehensive professional technical consulting services
- b、 Professional instruction of installation services.
- c、 Special line telephone to accept customers comprehensive consulting services, according to the quality of customers on the product and in the use of the process of the problem in a timely manner.

CUSTOMIZATION / HIGH QUALITY / PATIENCE / INNOVATION



FOSHAN HUASHENG FURNITURE
华昇家具

Business Manager: Rick Yang

Mobile/WhatsApp : +86 13431667603

Wechat: +86-15779118982

Email : huasheng1furniture@163.com

THANKS